

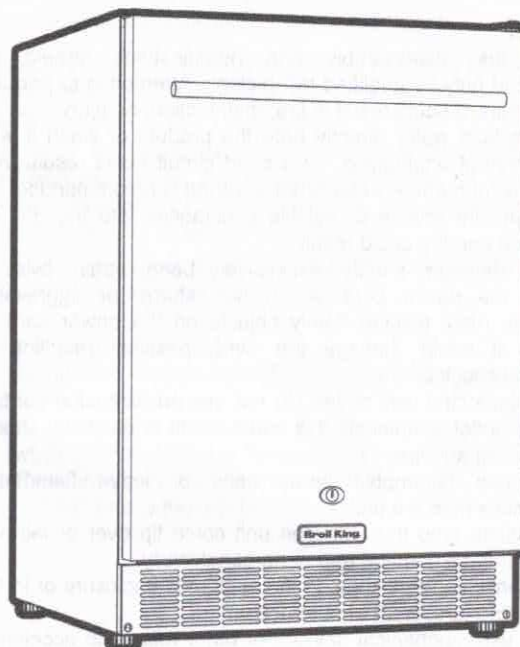
Broil King®

OWNER'S MANUAL

FOR USE WITH:
Broil King® OUTDOOR FRIDGE
MODEL: 800149EU

CONTENTS

SAFETY	2
SPECIFICATION	3
INSTALLATION	3
OPERATION	4
REVERSING THE DOOR	5
MAINTENANCE	5
TROUBLESHOOTING	6
WARRANTY	7



**NOTE TO INSTALLER THESE INSTRUCTIONS
MUST BE LEFT WITH THE CUSTOMER**

**PLEASE READ THIS ENTIRE MANUAL BEFORE INSTALLATION AND USE OF THIS APPLIANCE.
FAILURE TO FOLLOW THESE INSTRUCTIONS COULD RESULT IN PROPERTY DAMAGE,
BODILY INJURY, OR EVEN DEATH. SAVE THESE INSTRUCTIONS FOR FUTURE REFERENCE.
BE SURE UNIT IS STANDING UPRIGHT 24 HOURS PRIOR TO PLUG IN**

02243 - 9118620
info@omcbbq.com

Onward
MANUFACTURING COMPANY
555 KUMPF DRIVE
WATERLOO, ONTARIO, CANADA

SINCE 1906

EN
70094-F01 (Rev A) 12/19

SAFETY

Welcome to the Broil King® family. Please read all instructions before using this appliance. Use this appliance only for its intended purpose as described in this owner's manual. Always exercise basic safety precautions, as described below. After reading the instruction manual, store it in an accessible place where the user(s) of this product can easily find it.

The purpose of these safety precautions is to ensure safe and correct use of the product to minimize risks that could cause serious damage and injury to you or others. The safety precautions are divided into WARNINGS and CAUTIONS. Cases where improper handling of the unit could lead to death or serious injury are listed under the WARNING heading. However, the cases listed under CAUTION could also lead to serious results. To ensure safety, adhere strictly to both types of safety precautions.

WARNING

- All repairs, disassembly and modifications should be performed only by qualified technicians. Attempting to perform these yourself could result in fire, malfunction, or injury.
- Never splash water directly onto the product or wash it with water without unplugging, as a short circuit could result. In a rainy environment, a water-proof covering is recommended.
- Never put flammable or volatile substances into the unit as explosion and fire could result.
- Do not damage, modify, excessively bend, strain, twist or bundle the power cord. Avoid hot, sharp, or aggressive surfaces. Also, placing heavy objects on the power cord or binding it could damage the cord, possibly resulting in electrical shock or fire.
- Use a dedicated wall outlet. Do not use an extension cord or multiple-outlet adaptor as this could result in electrical shock, overheating and fire.
- Never use flammable spray cans or leave flammable substances near the unit.
- Never climb onto the unit. The unit could tip over or fall and cause material damage and/or personal injury.
- Keep ventilation openings, in the appliance enclosure or in the built-in structure, clear of obstruction.
- Do not use mechanical devices or other means to accelerate the defrosting process, other than those recommended by the manufacturer.
- Do not damage the refrigerant circuit.

CAUTION

- Damages caused by ambient temperatures of 4°C (40°F) or below are not covered by the warranty.
- This unit must be properly installed in accordance with the installation instructions along with all local codes before it is used. See grounding instructions in the Installation section.
- This model can either be built-in or free-standing. Built-in units vent at the bottom front and airflow at the front of this vent must be unimpeded.
- Install the unit in a location where the floor is sturdy enough to support the load of the unit. If the floor is not sturdy enough or installation is incorrectly performed, the unit could tip over and cause personal injury. If the unit is placed on a stand, the front surface must be 76.2mm(3") or more back from the edge of the stand in order to avoid accidental tipping of the appliance during normal usage.
- Never place heavy objects or items containing water on top of the unit. Objects could fall and cause injury and spilled water could cause the deterioration of the insulation of electrical components and result in electrical shock.
- Disconnect the unit if it is behaving abnormally, and do not reconnect until the situation is corrected.
- To avoid electric shock unplug the appliance before doing any maintenance on the unit.
- Never pull out the power cord when hands are wet!
- This unit is not intended for the storage of medicines or chemical reagents.
- Keep packing materials away from children.

- Condenser: Water from the evaporator drains into a hole in the floor of the storage compartment and is channeled into a drain pan located at the back of the unit on the compressor. Heat transferred from the compressor evaporates any water that is collected in the pan. Be sure the drain hole in the floor of the unit is clear and unobstructed.
- During long absences, remove the unit's contents, unplug the unit, clean it and leave the door open slightly to avoid possible formation of condensation, mold or odors. Use a cover to protect the unit and prolong its lifespan.
- Leave disassembly and disposal of the unit to qualified experts.

ELECTRICAL WARNINGS

Important! For your personal safety, this appliance must be properly grounded. In the event of an electrical short circuit, grounding reduces the risk of shock by providing an escape wire for the electric current.

- This appliance is equipped with a cord having a grounding wire with a grounding plug. The plug must be inserted into an outlet that is properly grounded and installed. The ground wire cannot be connected to a gas pipe, heating pipe, water pipe, telephone line or lightning rod. It cannot be replaced with the neutral wire of single-phase power. In addition to the ground wire, use an electrician installed ground fault circuit interrupter (GFCI) electrical outlet. If no GFCI is installed, electrical shock could result.
- Consult a qualified electrician if you do not completely understand these grounding instructions.
- **DO NOT UNDER ANY CIRCUMSTANCES CUT OR REMOVE THE THIRD (GROUND) PRONG FROM THE POWER CORD.**
- Do Not Use an Extension Cord
- Disconnect the power cord plug from the wall outlet before moving the unit and make sure that the power cord is not damaged during transport. A damaged power cord could result in electrical shock and/or fire.
- Never unplug the unit by pulling on the power cord. Always grip the plug firmly and pull straight out from the outlet. Pulling the cord could cause wire breakage, possibly resulting in overheating and fire.
- Repair or replace any cord that is frayed or damaged. Do not use a cord that shows cracks or abrasions along its length.

DANGER: Risk of child entrapment. Before throwing away an old appliance:

- Remove the door or lid.
- Leave shelves in place so that children may not easily climb inside.

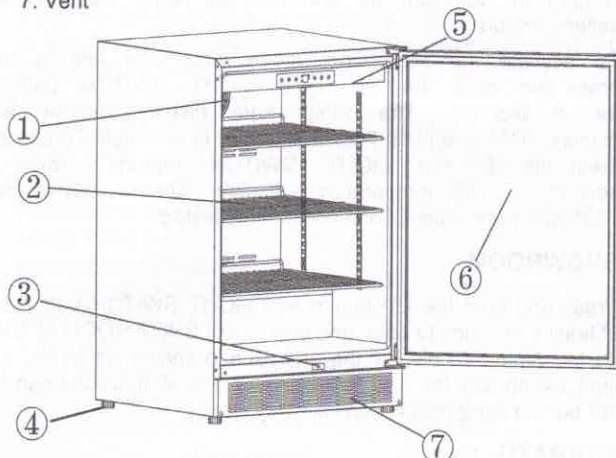
SPECIFICATIONS

This appliance is intended to be used in household and similar applications such as

- staff kitchen areas in shops, offices, and other working environments.
- farm houses and by clients in hotels, motels and other residential type environments; - bed and breakfast type environments;
- catering and similar non-retail applications.

PARTS OF THE FRIDGE

- | | |
|-----------------|-----------------|
| 1. Fan | 2. Shelves |
| 3. Light switch | 4. Leveling leg |
| 5. Light | 6. Door |
| 7. Vent | |

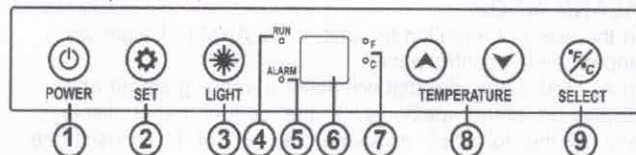


TECHNICAL SPECIFICATIONS

Model Number:	800149EU
Description:	Outdoor Fridge
Electrical Input:	220-240VAC ~ 50Hz
Current Rating:	0.5A
Unit Dimensions:	600 mm (23 5/8") Wide 850 mm (33 1/2") High 647 mm (25 1/2") Deep
Unit Weight:	47Kg (104 lbs)
Ambient Temp Range:	10-43°C (50 -110 °F)
Compartment Temp Range:	1-18°C (34 - 65 °F)
Refrigerant:	R600a

CONTROL PANEL

- | | |
|------------------------|-----------------------------|
| 1. Power button | 2. Set button |
| 3. Light on / off | 4. Compressor run indicator |
| 5. Alarm indicator | 6. Temperature display |
| 7. F/C scale indicator | 8. Temperature selection |
| 9. Temperature unit | |



ENERGY-SAVING TIPS

- Do not place the unit next to a heating vent, a range or in direct sunlight.
- Keep the door closed as much as possible, especially in hot, humid weather.
- Cover foods to reduce moisture buildup inside the appliance.

INSTALLATION

Remove the exterior and interior packaging. Use a soft dry cloth to wipe down the outside of the fridge thoroughly. Use a clean cloth dampened with lukewarm water to wipe down the inside of the fridge. The unit should be located in a well-ventilated area. Avoid placing it near any source of heat or moisture, or in direct sunlight. Direct sunlight may affect the finish, and nearby heat sources will cause higher electrical consumption.

The Fridge is designed to be either free-standing or built-in. It has motorized fans at the back of the unit that direct compressor-generated heat away from the compressor and through the front of the unit. Keep the front vents unobstructed.

Once the Fridge is positioned, the adjustable legs should be turned to level the appliance. This will reduce vibrations.

AMBIENT TEMPERATURE LIMITS FOR OUTDOOR USE

Do not install this appliance in a location where temperature will fall below 5°C (41°F) or rise above 43°C (109°F).

Operating the appliance in an ambient temperature which is too cold can cause the compressor to turn off for too long, causing the internal temperature in the appliance to rise, possibly resulting in loss of contents.

For best performance, do not install the appliance behind a cabinet door or block the front vent.

Temperature Display

Press the Temperature Select button to switch between Fahrenheit and Celsius.

Press and hold the Temperature Select button for over 6 seconds to switch the Panel Display Temperature from the setting temp to the Real Time Temperature of the cabinet.

The refresh rate of the real time temperature is 1 minute.

OPERATION

IMPORTANT: Do not plug in the Broil King® fridge for 24 hours after unit is set in place. Failure to do so may result in the unit working improperly.

COMPARTMENT DESIGN

The unit has 3 adjustable chrome-plated flat wire shelves to hold cans and bottles of beverages such as beer, water, and soft drinks. The control panel enables you to set your desired temperature and displays the current temperature inside the compartment.

FIRST USE

The fridge control is pre-set at the factory. Initial start up requires no adjustments.

TURNING ON THE UNIT

Plug in the Fridge to turn it on automatically. (After the unit has been on for about 6 hours, the compressor will shut down for thirty minutes to allow for automatic defrosting.)

If you want to use the Automatic Temperature (default) setting, do nothing further. The unit will automatically set the temperature in the compartment at 4°C(40°F). If you want to set other temperatures, see below.

TEMPERATURE SETTING

To adjust the temperature, press the SET button, then use the UP/DOWN keys to navigate to the preferred temperature. The range of set temperatures is from 2 to 17°C (36 to 64°F). For example, if you are storing red wine, you may want to set a temperature of 16°C(61°F). When your desired temperature appears in the DISPLAY window of the control panel, press SET to confirm. The actual temperature inside the unit will now appear in the window. This temperature will vary depending on the number of bottles stored and how frequently the door is opened.

Please note: The temperature sensor records the average temperature of the unit. Cold air falls and warmer air rises, and there will be a temperature variation from the bottom to the top of the unit. The temperature at the bottom of the unit will always be slightly colder. The controller controls the average temperature of the unit. The temperature displayed by the electronic control panel is the instantaneous average temperature of the unit and there may be a variation from top to bottom of the appliance. This could be a maximum of 3°C (6°F).

When fully loaded with room temperature product, the fridge will operate continuously for as long as 24 hours to reduce the temperature inside the cabinet to the desired point. Under normal conditions, when the unit has been on for six hours, it will go through the auto defrost function for a period of about thirty minutes.

Wine Storage Temperatures: While wines store best at temperatures around 13-14°C (56-58°F), your unit also allows you to store wine at drinking temperatures. Generally, RED WINE should be kept at 15-16°C (60-61°F) and WHITE WINE, which is usually served chilled, is best kept at 12-13°C (54-55°F). Sparkling wines should be kept at about 7°C (46°F). For beer and soft drinks, choose the temperature setting that is most agreeable to you and your guests.

The unit is designed to operate in ambient temperatures between 10°C(50°F) and 38°C (100°F). Higher ambient temperatures may reduce the unit's ability to reach low temperatures. Best results are obtained at temperatures between 18°C(65°F) and 27°C (80°F) for built-in models and between 18°C(65°F) and 32°C (90°F) freestanding models.

DAMAGES CAUSED BY AMBIENT TEMPERATURES OF 4°C(40°F) OR BELOW ARE NOT COVERED BY THE WARRANTY.

To temporarily stop the cooling cycle, unplug the fridge. To shut it down for longer periods of time, disconnect the plug and leave the door partially open to avoid odors or mold.

NOTE: If you unplug the Fridge, allow 3 minutes before plugging it back in. The unit will not restart in less than 3 minutes.

MEMORIZED TEMPERATURE SETTINGS

Your unit has been designed to "remember" the last run mode to which it was set. If there is a power outage or any other power cut off, the unit will automatically return to the previous temperature setting after the power has returned.

FAST COOL MODE

When you set the outdoor fridge in Fast Cool mode, the fridge will rapidly cool the unit to -2°C(28°F). Once the temperature reaches -2°C(28°F), the compressor will turn off and the Fast Cool mode will be disabled. Once the internal temperature reaches 2°C(36°F) degrees higher than the current set temperature, the compressor will turn on and cool to reach the previous set temperature.

To activate the Fast Cool mode when the unit is on, press and hold the SET and LIGHT SWITCH buttons for 6 seconds. The temperature display window will display "C1" when unit Fast Cool mode is activated. To cancel, press the SET and LIGHT SWITCH buttons for 6 seconds. The temperature display window will display "C0" when unit Fast Cool mode is deactivated.

SHOWROOM

Press and hold the UP button and LIGHT SWITCH button for at least 6 seconds to enter and also to exit SHOWROOM MODE. It's for dealers to display the unit. During showroom mode, the light, evaporator fan, the panel display and all functions can be set but the compressor won't actually work.

SABBATH

Sabbath will shut off the screen display, the operating sounds, and the light will remain off while the unit still running automatically according to the previous setting. Press and hold the SET button and the DOWN BUTTON for 6 seconds to toggle SABBATH ON/OFF.

DOOR ALARM

If the door has been left open for more than 5 minutes, the alarm will sound. The alarm will stop by closing the door or pressing any button once besides the ON/OFF button. OR, press LIGHT SWITCH button and DOWN button together to disable the alarm function.

COMPRESSOR RUN INDICATOR

When the compressor is running, the control panel will light a running LED light representing a running compressor. When the compressor stops running, as it reaches the desired temperature, the running LED will go out as well.

ALARM MODE

In the event of a fault in the unit, an ALARM LED light will appear on the control panel. In ALARM mode, the unit will make a beeping sound and display an alarm message. If the control panel displays any of the following messages: EI, HI or LI, consult the Troubleshooting section of this manual.

INTERIOR LIGHT

The interior light can be turned On or Off automatically with the opening or closing of the door.

SHELVING

The unit has 3 adjustable chrome-plated flat wire shelves to hold cans and bottles of beverages such as beer, water and soft drinks. These racks are designed to only be pulled out 1/3 of the way. This is a safety feature so that the fridge will not tip over or the shelf fall out.

The racks are removable and reversible. To remove a rack, take out the cans on the rack and pull it out until it stops. Then lift up the front of the rack and remove it from the unit. Use these steps in reverse to reinstall the shelf.

REVERSING THE DOOR

TOOLS REQUIRED:

Slot screwdriver	Phillips screwdriver
------------------	----------------------

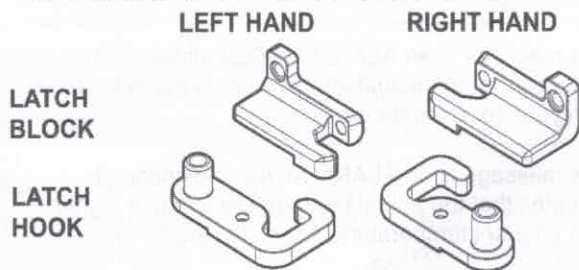
IMPORTANT: Before you begin, unplug the fridge, or disconnect power.

TO REMOVE DOOR FROM HINGES:

1. Using a flathead screwdriver, separate the hinge axis from Hinge 1. Set aside.
2. Open the door about 20° around the axis of Bottom Hinge 2, then lift the door off Bottom Hinge 2.
3. Remove the right latch hook located in the right bottom of the door and plastic cap located in the left bottom of the door.
4. Install the left latch hook (in accessory bag) to the left bottom of the door where the plastic cap was placed and put the plastic cap on the right side of the door.

TO REPLACE DOOR ON HINGES:

5. Using a flathead screwdriver, remove the plug buttons from the screw holes opposite the door hinges, top and bottom. Set aside.
6. Replace the axis on the Hinge 1 and tighten it firmly. Remove Hinge 1 and install it with left latch block (in accessory bag) on the opposite bottom side.
7. Remove Hinge 2 and take down the right latch block, place Hinge 2 on the opposite top side. Separate the axis from Hinge 2 and set it aside.
8. Align the door on Bottom Hinge 1 and replace axis on Hinge 2. Tighten it firmly.
9. Push the plug buttons into the original screw holes.



MAINTENANCE

CLEANING THE OUTSIDE

Unplug your Fridge. Clean the outside with a cloth dampened in mild soapy water. Dry thoroughly with a soft cloth. Polish with Broil King® stainless steel cleaner / polish (#62385). When polishing stainless steel follow the direction of the grain.

To clean the door gasket, use only mild soapy water. Never use harsh cleansers or scouring pads to clean any part of your unit.

CLEANING THE INSIDE

Unplug your Broil King® Fridge and remove its contents. Rinse the inside surfaces with plain water and dry the chrome racks and shelving. Avoid getting excess water inside the machine since it will flow into the water trap near the compressor and possibly overflow.

DEFROSTING THE UNIT

The unit incorporates an automatic defrost system in which the refrigerated surfaces of the unit defrost automatically. Defrost water drains into a hole in the floor of the storage compartment and is channeled into a drain pan located at the back of the unit near the compressor. Heat transferred from the compressor evaporates any water that has collected in the pan. Be sure the drain hole in the floor of the unit is clear and unobstructed.

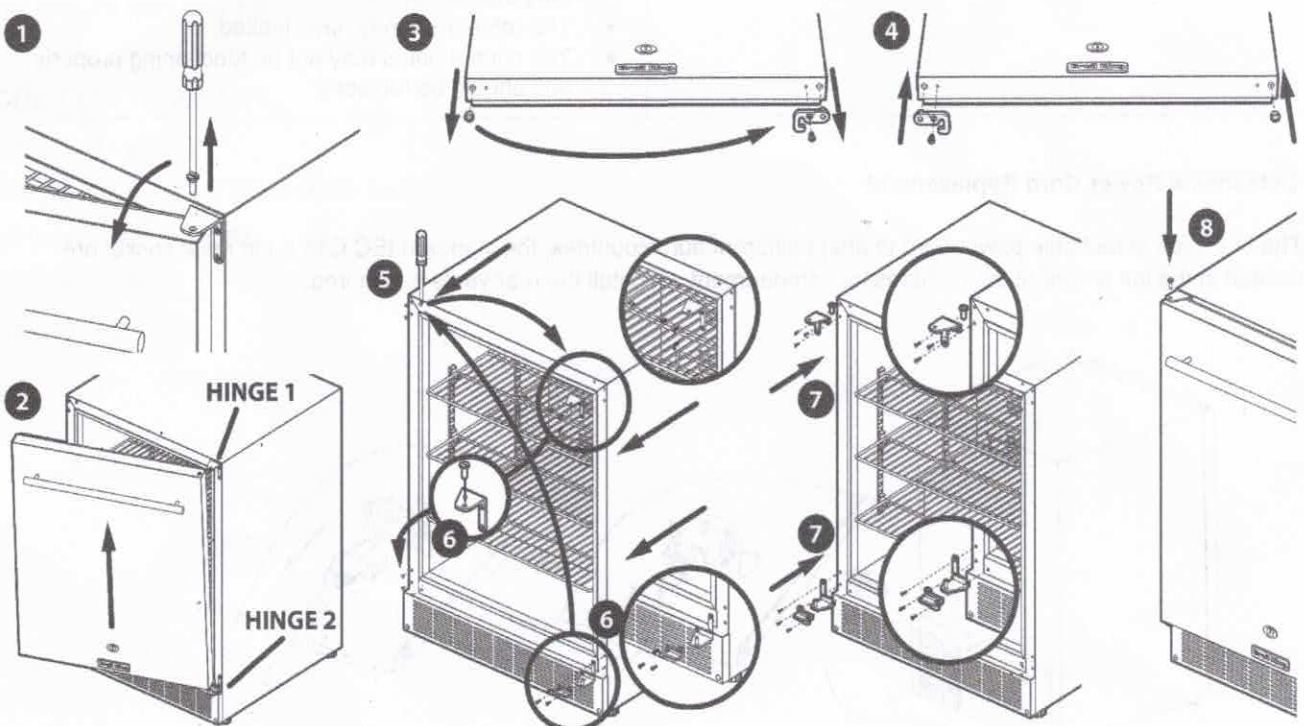
PROLONGED SHUTDOWN VACATION/HOLIDAY,

The following steps are recommended for periods of extended non-use:

- Remove all contents from the unit.
- Disconnect the power cord from its outlet/socket and leave it disconnected until the unit is returned to service.
- Clean and dry the interior of the unit. Ensure all water has been removed from the unit.
- The door must remain open to prevent formation of mold and mildew. Prop open the door at a minimum of 50mm(2") to provide the necessary ventilation.

WINTERIZATION

If the unit will be exposed to temperatures of 4°C(40°F) or less, the steps for a prolonged shutdown must be followed.

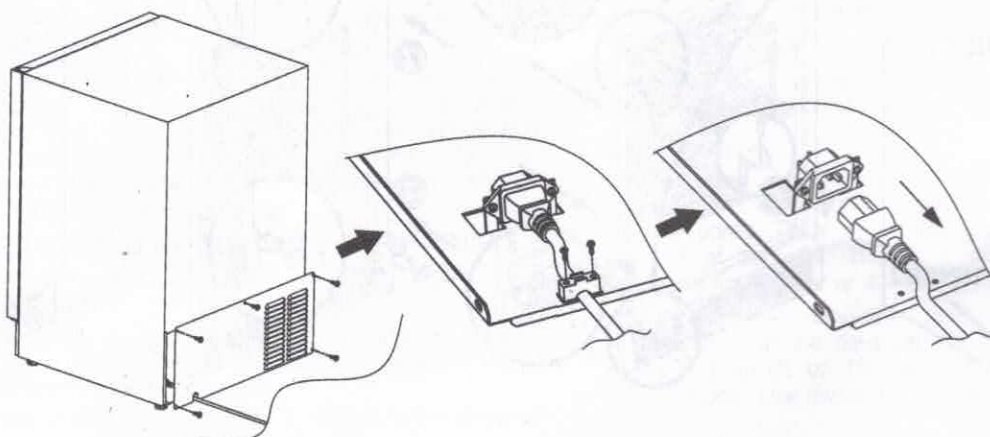


TROUBLESHOOTING

PROBLEM	POSSIBLE CAUSE
Unit does not turn on	Not plugged in. Fuse blown or circuit breaker tripped. Press Power Button on control panel.
Noise or vibration	Check that unit is level. If not, adjust leveling legs.
Unit is too warm	Check that door is properly closed and sealed. Check if door has been opened frequently or recently filled with product. Check temperature setting. (To change the temperature setting, follow the steps in the Operating Your Fridge section of this manual.)
Unit Develops Condensation on External Surfaces	Door is not shut properly or opened excessively Ambient temperature or humidity is very high
Temperature Window displays "E1"	This message is an ALARM MODE indication. It indicates that thermostatic sensor has malfunctioned. Contact your authorized service facility for sensor replacement.
Temperature Window displays "LI"	This message is an ALARM MODE indication. It indicates that the actual temperature is much lower than your set temperature.
Temperature Window displays "HI"	This message is an ALARM MODE indication. It indicates that the actual temperature is much higher than your set temperature. Possible causes are: <ul style="list-style-type: none"> • The door might not be fully closed. • The unit may have been recently loaded with room temperature product. • The refrigerant may have leaked. • The control panel may not be functioning properly and should be replaced.

Detachable Power Cord Replacement

The unit uses detachable power cord to adapt different euro countries, the standard IEC C14 3-pin male socket are located in the left corner of the compressor compartment, uninstall the rear vents is required.



WARRANTY & CUSTOMER SERVICE

The Onward Manufacturing Company Ltd. (OMC) voluntary warranty is effective from date of purchase and is limited to the repair or replacement of parts at no charge which prove to be defective under normal domestic use. In Canada and the United States replacement is FOB Factory.

In all other countries replacement is FOB OMC Distributor. (Consult your dealer for name of OMC Distributor.)

All other costs are the responsibility of the owner.

This warranty is extended only to the original purchaser as indicated on the warranty registration and applies only to products sold at retail and only when used in country where purchased.

WHAT IS COVERED:

COMPRESSOR & ELECTRICAL COMPONENTS	2 years
REMAINING PARTS	2 years

WHAT IS NOT COVERED:

- Any failures or operating difficulties due to accident, abuse, misuse, alteration, misapplication, vandalism, improper installation or improper maintenance or service, or failure to perform normal and routine maintenance as set out in the owner's manual.
- Deterioration or damage due to severe weather conditions such as hail, hurricanes, earthquakes or tornadoes, discoloration due to exposure to chemicals either directly or in the atmosphere.
- Shipping or transportation costs.
- Removal or re-installation costs.
- Labor costs for installation and repair.
- Cost of service calls.
- Liability for indirect or consequential damages.

REPLACEMENT PARTS:

"Genuine OMC Replacement Parts" must always be used for replacement. Use of any other parts will automatically nullify the above warranty.

WARRANTY CLAIMS:

All warranty is handled directly by OMC. Parts must be returned to OMC Warranty Department, shipping charges prepaid, accompanied by model #, Serial #, and if your appliance is not registered, proof of purchase (copy of sales slip or invoice). If inspection confirms the defect, OMC will repair or replace such part in accordance with the terms of the warranty. On receipt of letter or fax (not by phone) OMC may, at its option, not require part or parts to be returned.

CONTACT GERMANY:

02243 - 9118620

BROIL KING DEUTSCHLAND GMBH

SPINNERWEG 51-54

EITORF, 53783

DE